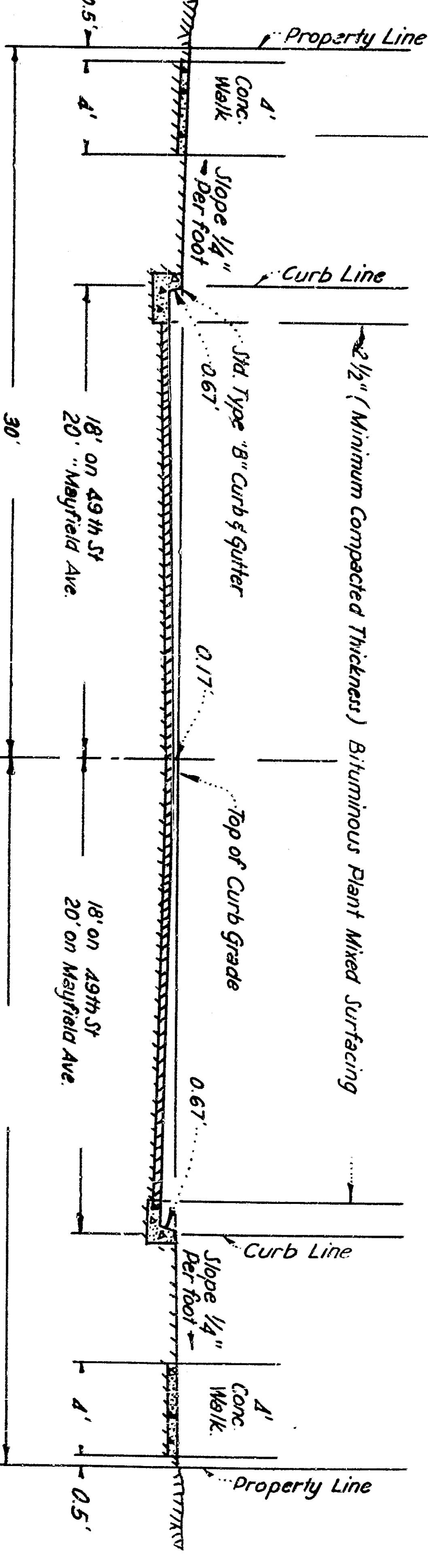
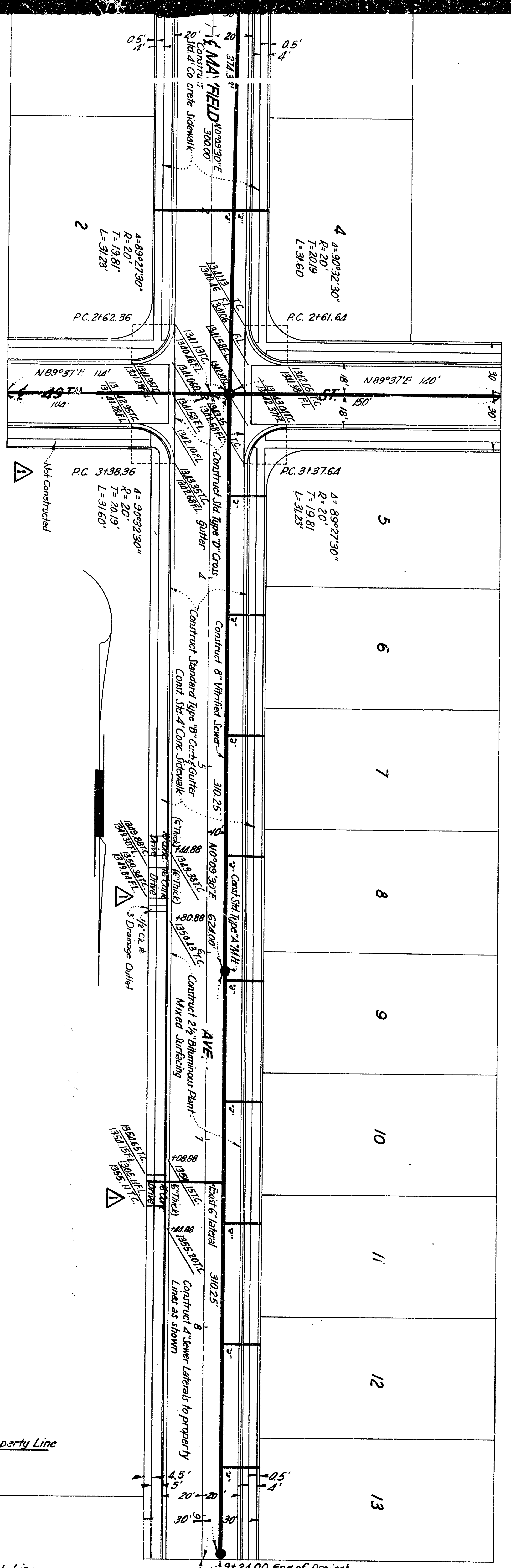


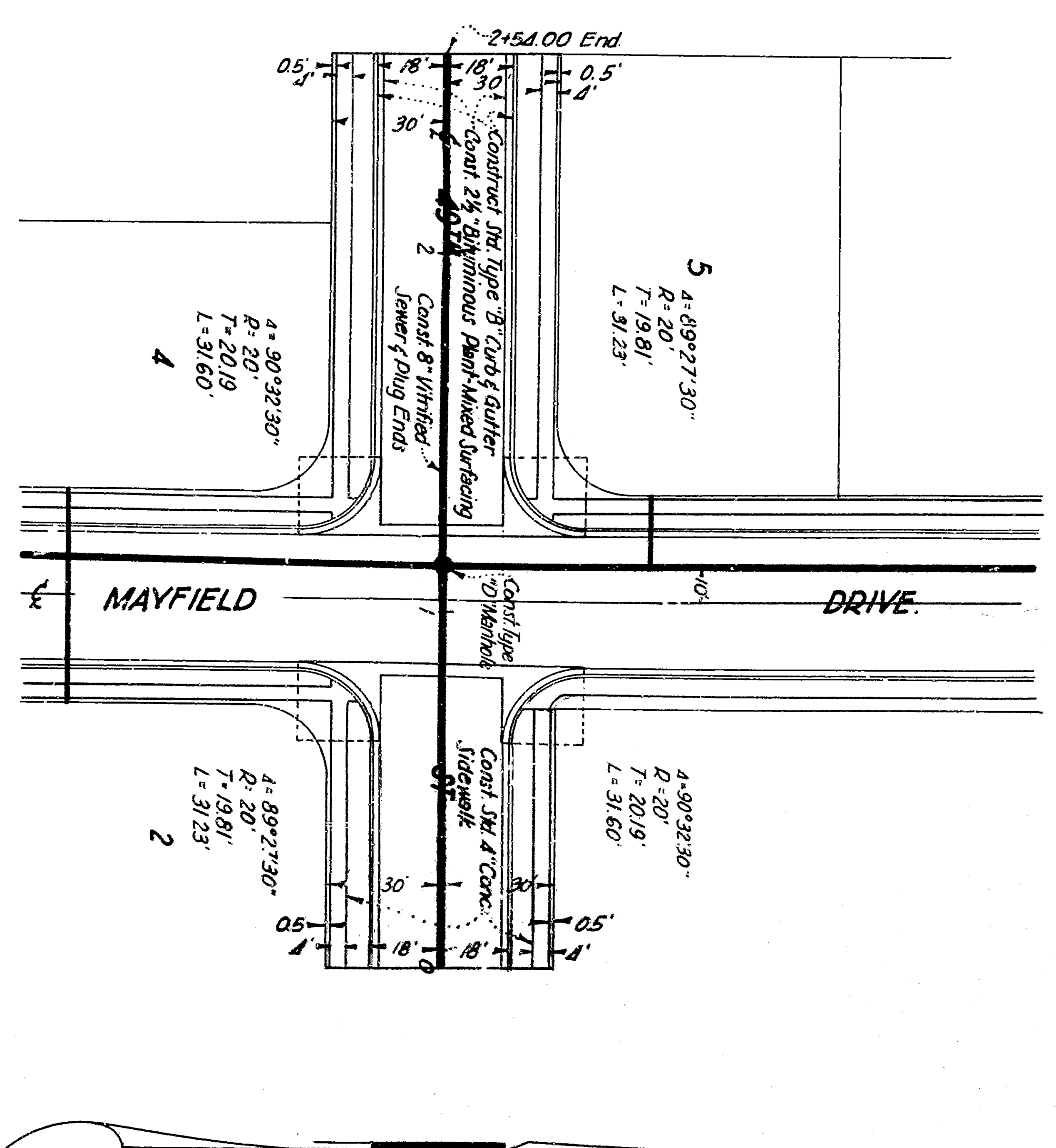
PROFILE SCALE: 1"=40'
HORIZONTAL SCALE: 1"=40'



TYPICAL CROSS-SECTION
MAYFIELD AVE - 49th ST.
SCALE: 1"=6'

NOTE: All work indicated on these plans shall be done in conformity with applicable provisions of Specifications No. 2027.

NOTE: 1. 5' concrete curb with reinforced adjacent to curb on East side of Mayfield Ave from 49th St to Sta. 3124.00



DATE	BY	REVISION
APPROVED	DESIGNED	ENGINEERING
CHECKED	DRAWN	PLANNING
REGISTERED CIVIL ENGINEER		

SUBMITTED BY: CHAS. L. FOWLER, C.E. 183
 APPROVED: [Signature] MAY 18 1923
 CITY OF SAN FRANCISCO
 IMPROVEMENT PLAN - TRACT 4208
 FORTY-EIGHTH ST. - MAYFIELD AVE.
 49th ST.
 SCALE: 1"=6'
 REGISTERED CIVIL ENGINEER 7545